

## Free Online Courses for Adult Residents of Greenwich

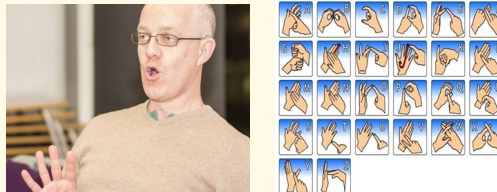
All sessions are on zoom and you will need Internet access and a computer

### Introduction to Lipreading

Find out about the skills involved in lipreading and build your confidence in understanding conversations.

This course is suitable for those with little or no experience of lipreading, who have acquired hearing loss or who want to support a family member or friend who has hearing loss.

**Every Monday from 14th June to 5th July 9.30– 11.00**



### Introduction to British Sign Language

This course introduces you to British Sign Language (BSL), an officially recognised language in its own right, with a unique grammatical structure.

This course is ideal for anyone who is interested in finding out more about BSL and learning some basic vocabulary and grammar to enable them to communicate with Deaf sign language users.


**Every Thursday 10th June to 8th July 12.45 - 14.45pm**


For more information or to book a place please contact


[Helen.Sprogis@citylit.ac.uk](mailto:Helen.Sprogis@citylit.ac.uk) tel: 07818896575 or [Millie.Easter@citylit.ac.uk](mailto:Millie.Easter@citylit.ac.uk) tel: 07733307266

\* Tablets and smart phones are not suitable for these courses. If you do not have access to a computer, please let us know as we may be able arrange for you to borrow one.

Find out more about our courses and workshops by following us on Instagram, twitter or facebook.

 @citylitfamilylearninggreenwich

 @CityLitFL

 citylitfamilylearning